



Precision Engineering & Cold Forming

ABOUT US...

75 YEARS IN
PRECISION
ENGINEERING



6000 ^{M2}
OF PRODUCTION SPACE

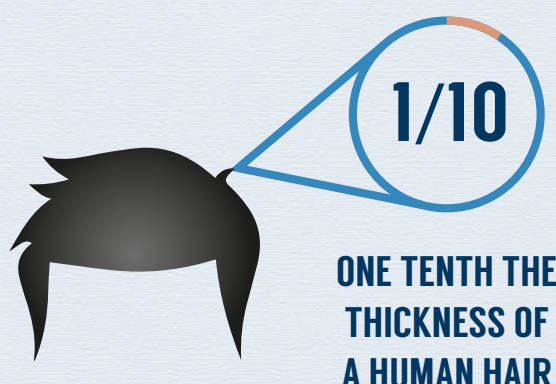
 **200**
MACHINE TOOLS ON SITE

 **£500,000** INVESTED IN NEW PLANT
EQUIPMENT EACH YEAR

PRECISION AND POWER


HYDRAULIC
PRESS
PRESSURES TO
600
TONNES

COMPONENTS TO
TOLERANCES UNDER **10** MICRONS




MACHINE
450
SPINDLES

EVERY YEAR

30  **MILLION**
COPPER FORMED
PARTS MANUFACTURED

 **50 MILLION**
TRANSFER HEADING
OPERATIONS

 **1 MILLION**
DIE CASTING MACHINED
IN ALUMINIUM AND ZINC

 **5 MILLION**
PRECISION
GROUND COMPONENTS

300 TONNES
OF COPPER COLD FORMED 



Branch Address: Via Busto Fagnano, 40, 21057 Olgiate Olona VA, Italia.
Headquarters Address: Building 4, Dazhonggang Industrial Zone, Shajing Street, Baoan,
Shenzhen, China. 518125



+86-755-27299111



italy.mfgmachined.com



inquiry.it@made-parts.com